



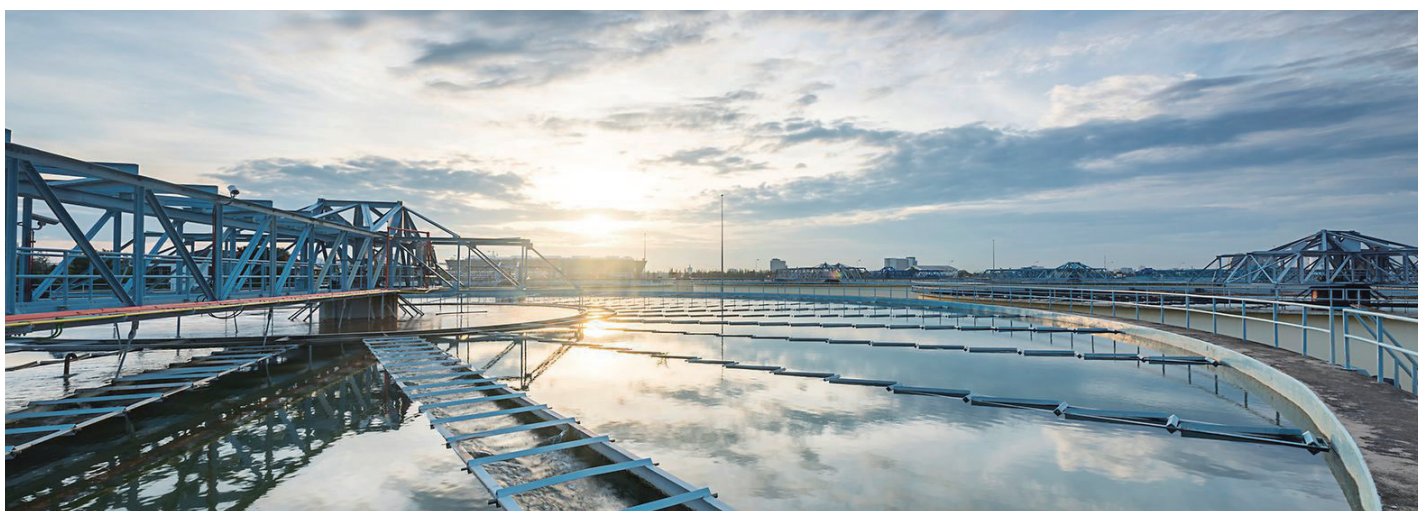
EVERGEAR®

www.evergear.com.cn



**DRIVE SOLUTION
EXPERT IN
ENVIRONMENTAL
PROTECTION
INDUSTRY**

环保行业 传动方案专家



COMPANY PROFILE

企业介绍



Zhejiang EVERGEAR drive Co., Ltd. is a national high-tech enterprise integrating R&D, manufacturing, sales and service of gear reducer products. The leading products are: ER, EK, EF, ES, EH/EB, Q, Z and other 12 series of products, product supporting power 0.18 ~ 4000KW, nearly ten thousands kinds of transmission ratio, serialized "EVERGEAR" products for Customer selection. Passed the ISO9001 quality management system, ISO14001 environmental management system, GB/T28001 occupational health and safety management system and CE certification. The company insist in scientific and technological innovation, won "provincial high-tech enterprise research and development center", set up a development center in Shanghai city, and is committed to the research, development and digital design of international and domestic gear reducer products. Currently, we has obtained 3 invention patents and 38 utility models patents. As a member of China Speed Reducer Standardization Committee, EVERGEAR has been awarded as "National Spark Program Implementation Unit", "Quality Products brand of Zhejiang manufacturing", "Zhejiang Science and Technology Enterprise", "Zhejiang Patent Demonstration Enterprise", "One of "Top Ten Brands" of Chinese gearbox Industry" "Zhejiang Enterprise Growth Stars" and other honorary titles.

We uphold the concept of "Persist in Heart, Persistent Gears" and warmly welcome new and old friends of domestic and abroad to visit and guide.

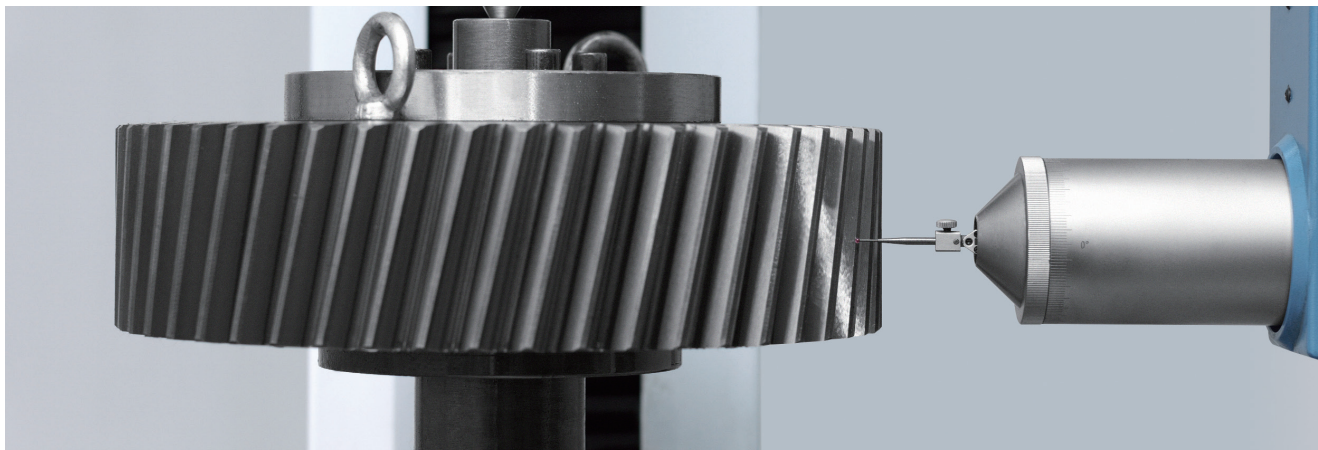
浙江恒齿传动股份有限公司是一家集减速机产品研发、生产制造、销售服务于一体的国家高新技术企业。

公司的主导产品有：ER、EK、EF、ES、EH/EB、Q、Z等12种系列产品，产品配套功率0.18~4000KW，近万种传动比，系列化的“恒齿”产品供客户选择。通过了ISO9001质量管理体系、ISO14001环境管理体系、GB/T28001职业健康安全管理体系和欧盟CE认证。公司坚持科技创新，具有“省级高新技术企业研究开发中心”，在上海设立开发中心，致力于国际、国内减速机设备的研制、开发和数字化设计，目前取得3项发明专利，38项实用新型专利。公司作为中国减速机标准化委员会委员单位，获评为“国家星火计划实施单位”、“品字标浙江制造”、“浙江省科技型企业”、“浙江省专利示范企业”、“中国行业减速机十大品牌”、“浙江省企业成长之星”等荣誉称号。

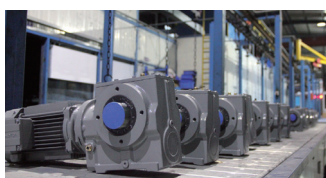
我们秉承“恒之以心，齿之以恒”的理念，热忱欢迎国内外新老朋友，莅临恒齿公司参观指导。

ADVANCED PRODUCTION EQUIPMENTS ARE THE BEST MATERIAL FOUNDATION FOR QUALITY ASSURANCE

先进的生产设备是确保产品质量最好的物质基础



CNC workshop
数控车间



Painting workshop
烤漆车间



Production workshop
生产车间



Customer service
客户服务



Precision grinding
精密磨齿



Assembly line
装配流水线



Painting line
喷漆流水线



Waste gas environmental treatment
废气环保处理

CULTURE 企业文化



Pragmatic, sincere and trustworthy
务实实干、至诚守信



Full Marathon Spirit
全员马拉松精神

EH/EB HIGH POWER REDUCER

大功率齿轮减速机

传动比:

1.25~450

输出转矩:

最大 900KN.m

电机功率:

2.2~5366kw

安装形式:

底脚安装 / 轴装安装

Ratio:

1.25~450

Output Torque:

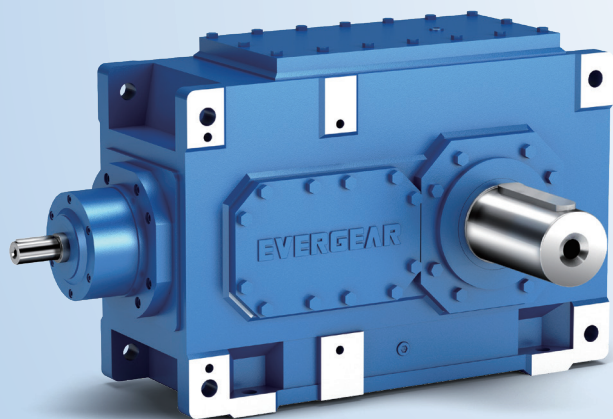
up to 900KN.m

Motor Power:

2.2~5366kw

Mounted Form:

foot-mounted / shaft mounted



Q PLANETARY GEAR REDUCER

行星齿轮减速机

传动比:

25~4000

输出转矩:

22~2600KN.m

电机功率:

0.19~12934kw

安装形式:

底脚安装 / 法兰安装 / 轴装安装

Ratio:

25~4000

Output Torque:

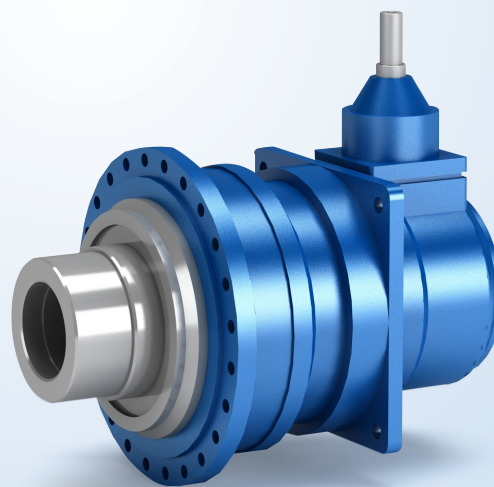
22~2600KN.m

Motor Power:

0.19~12934kw

Mounted Form::

foot-mounted / flange mounted / shaft mounted

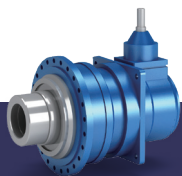


撕碎机 / 撕碎设备 Shredder /Shredder equipment

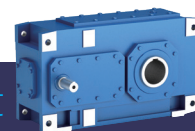
垃圾破碎机是破碎机的一种，用途广泛，适用于破碎电子垃圾，医疗垃圾，餐厨垃圾，工业垃圾，生活垃圾等各种固废废弃物。

The garbage shredder is a kind of crusher and is widely applied for crushing various solid wastes such as electronic waste, medical waste, kitchen waste, industrial waste and domestic garbage.

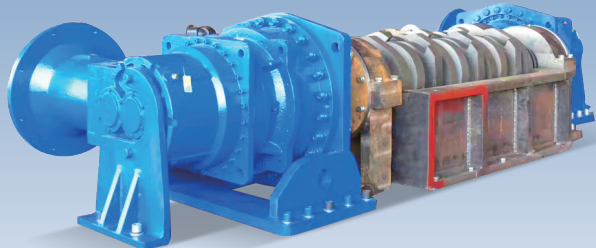
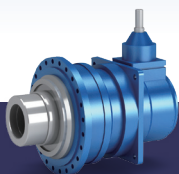
撕碎机 Shredder



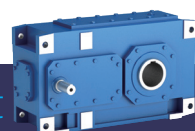
撕碎设备 Shredder Equipment



撕碎设备 Shredder Equipment



撕碎设备 Shredder Equipment



EF SERIES PARALLEL SHAFT HELICAL GEAR MOTOR

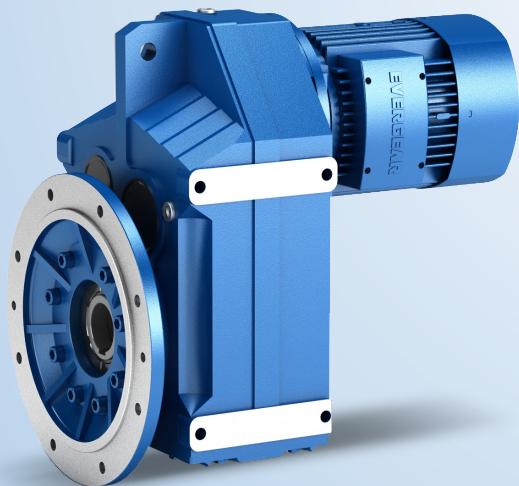
平行轴斜齿轮减速机

具有集成扭矩臂的平行轴减速电机安装和连接简便,使用经济。

功率范围从 0.18 kW 至 200 kW
10 种减速箱尺寸,最大扭矩 18000N.m
通过两级或三级传动基础设计实现高效率等级
标配高防护等级 IP65

**Parallel shaft geared motor with integrated torque arm
Easy to install and connect, economical to use.**

Power range from 0.18 kW to 200kW
10 types of gearbox sizes,
The maximum torque is 18000N.m
High efficiency rating through two or three stages drive
foundation design
Standard high protection class IP65



EK SERIES HELICAL BEVEL GEAR MOTOR

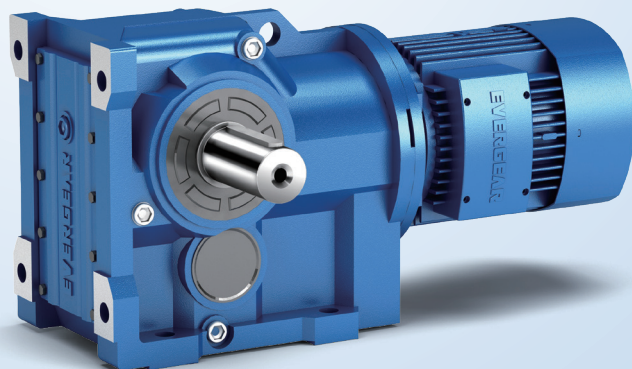
弧齿锥齿轮硬齿面减速机

高功率密度,直角输出,伞齿轮减速电机可确保高总体效率,特别是变频器驱动时。

功率范围从 0.18 kW 至 200 kW
12 种减速箱尺寸,最大扭矩 50000N.m
减速箱直角输出,可带通用附件
通过三级传动基础设计实现高效率等级
标配高防护等级 IP65

**High power density, right angle output,
bevel gear motor ensures
High overall efficiency,
especially when the drive is driven.**

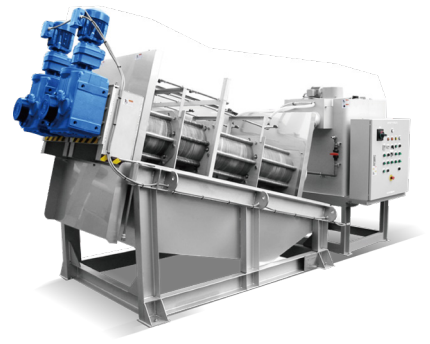
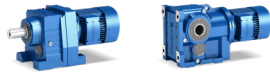
Power range from 0.18 kW to 200kW
12 types of gearbox sizes,
The maximum torque is 50000N.m
Gearbox right angle output with universal accessories
High efficiency rating through
three-stage drive foundation design
Standard high protection class IP65



Spiral sludge dewatering machine

叠螺式污泥脱水机

叠螺式污泥脱水机可广泛用于市政污水处理工程以及石化、轻工、化纤、造纸、制药、皮革等工业行业的水处理系统。



Sand water separator

砂水分离器

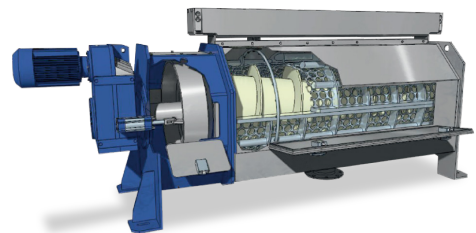
砂水分离器是沉砂池除砂系统的配套设备，其作用是将沉砂池排出的砂水混合液进行砂水分离。



Screw press

螺旋压榨机

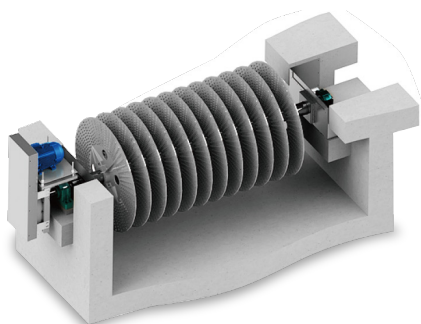
螺旋压榨机是拦污格栅的配套设备，它是由进料斗、压榨螺旋、螺旋管、排渣管和驱动装置组成。格栅捞取的栅渣或过滤后滤渣从进料斗进入螺旋管，在压榨螺旋的作用下被挤压、脱水。



Stack aerator

转叠曝气机

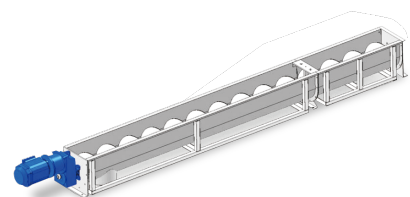
转叠曝气机又名曝气转盘，属于机械曝气机中的水平轴盘式表面推流曝气器。曝气器由曝气转盘、水平轴及两端的轴承、电动机及减速器构成。



Screw conveyor

螺旋输送机

螺旋输送机在输送形式上分为有轴螺旋输送机和无轴螺旋输送机两种，螺旋输送机的工作原理是旋转的螺旋叶片将物料推移而进行螺旋输送机输送，使物料不与螺旋输送机叶片一起旋转的力是物料自身重量和螺旋输送机机壳对物料的摩擦阻力。



ER SERIES HELICAL GEAR MOTOR

斜齿轮硬齿面减速机

紧凑和经济的同轴减速电机即使在恶劣条件下,也具有长使用寿命。

功率范围从 0.18 kW 至 160 kW

13 种减速箱尺寸,最大扭矩 18000N.m

安装方式灵活多样

通过两级或三级传动基础设计实现高效率等级

标配高防护等级 IP65

Compact and economical coaxial geared motor even in evil Under inferior conditions, it also has a long service life.

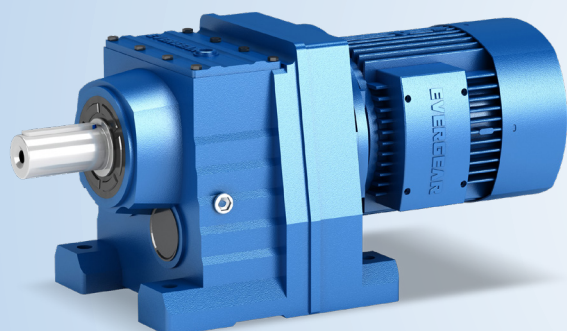
Power range from 0.18 kW to 160 kW

13 types of gearbox sizes, maximum torque 18000N.m

Flexible installation method

High efficiency rating through two or three stages drive foundation design

Standard high protection class IP65



ES SERIES HELICAL-WORM GEAR MOTOR

蜗轮蜗杆减速机

用途广泛,减速箱直角输出,斜齿轮硬齿面 - 蜗轮蜗杆减速机电机工作平稳,为诸多设备的驱动提供可靠保障。

功率从 0.12kW 至 22kW

7 种减速箱尺寸,最大扭矩 4000Nm,

通过两级传动基础设计实现高效率等级。

标配高防护等级 IP65

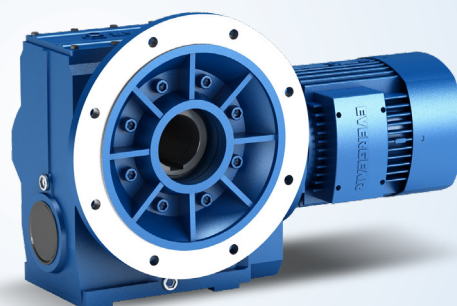
Wide range of applications, right angle output of gearbox, helical gear hard surface - worm gear motor works smoothly, providing reliable protection for many equipment drives

Power rang from 0.12kW to 22kW

7 types of gearbox sizes, maximum torque 4000Nm,

High efficiency levels are achieved through a two-stage drive foundation design.

Standard high protection class IP65



Mixing equipment

搅拌系列设备



搅拌设备是一种用途广泛,保证物料的有效混合;消耗最少的功率;所需费用最低;操作方便;易于维修。



Belt pressure filter

带式压滤机



带式压滤机带式压榨过滤机脱水过程可分为预处理、重力脱水、楔形区预压脱水及压榨脱水四个重要阶段运用全新型设备过滤机程控自动厢式压滤机、隔膜压滤机、深度污泥脱水压滤机、一体化污水污泥处理设备、在线精密过滤系统等价格合理、性能可靠的环保过滤产品。



Flotation equipment

气浮设备



气浮设备是一类在水中通入或产生大量的微小气泡，使空气以高度分散的微小气泡形式附着在悬浮物颗粒上，造成密度小于水的状态，利用浮力原理使其浮在水面，从而实现固-液分离的水处理设备。

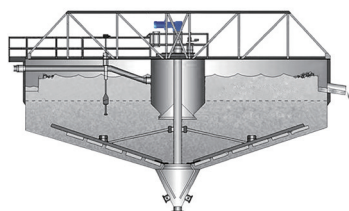


Mud scraper

刮泥机



刮泥机，是一种将淤泥从河道里清理出来的一种机器，用于城市污水处理厂、自来水厂以及工业废水处理中直径较大的圆形沉淀池中，排除沉降在池底的污泥和撇除池面的浮渣。



Mechanical grille

机械格栅



机械格栅是一种可以连续自动拦截并清除流体中各种形状杂物的污水处理专用设备，可广泛地应用于城市污水处理、自来水行业、电厂进水口，同时也可以作为纺织、食品加工、造纸、皮革等行业废水处理工艺中的前级筛分设备，是我国最先进的固液筛分设备之一。



Hyperboloid mixer

双曲面搅拌机

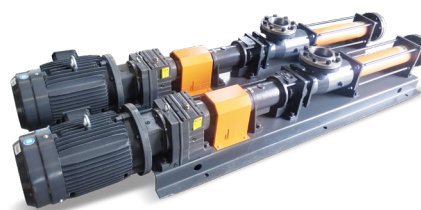


双曲面搅拌机也叫具有双层叶轮的曝气搅拌装置.双曲面叶轮体上表面为双曲线母线绕叶轮体轴线旋转形成的双曲面结构。其独特的叶轮结构设计，最大限度地 将流体特性与机械运动相结合。



Single screw pump

单螺杆泵



CHARACTERISTICS AND ADVANTAGES

特点和优势

1. 速比划分细

满足各种高低速运转需求

THE SPEED RATIO IS FINE

Satisfy all kinds of high and low speed operation requirements

2. 高效节能

为您提供节能型三相电机，它不仅将为您提供卓越的效率，同时运行成本被大大降低

HIGH EFFICIENCY AND ENERGY SAVING

Provide you with energy-saving three-phase motor. It will not only provide you with excellent efficiency, At the same time, the operation cost has been greatly reduced.



3. 优质齿轮

作为享誉全国的齿轮减速机专业制造商，齿轮材质选用高强度低碳合金钢，经渗碳淬火和抛丸磨削，齿面硬度为 HRC58-62，芯部硬度为 HRC32-38。精度达到 6 级。除此之外，我们与全国知名的轴承厂商“哈瓦洛”等精诚合作，选择满足设计要求的轴承，确保减速机整体品质

PREMIUM GEAR

As a well-known professional manufacturer of gear reducer in China, The gear material is made of high strength low carbon alloy steel. After carburizing, quenching and shot blasting grinding, The hardness of the tooth surface is HRC58-62. The core hardness is HRC32-38. The accuracy is up to 6 levels. Besides, We cooperate with Havaro, a well-known bearing manufacturer in China. Select bearings that meet the design requirements. Ensure the overall quality of reducer

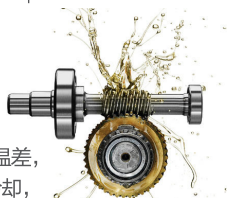


4. 专业润滑

不同的季节，以及白天和夜晚的温差，都会导致减速机润滑油膨胀和冷却，从而使减速机的油位调节显得非常重要，恒齿公司在污水处理专用减速机上配置了膨胀油杯，确保对减速机有良好的润滑。

PROFESSIONAL LUBRICATION

Different seasons and temperature differences between day and night, It will lead to the expansion and cooling of the reducer lubricating oil. So it is very important to adjust the oil level of the reducer. EVERGEAR has installed expansion oil cup on the special reducer for sewage treatment. Ensure good lubrication for reducer.



5. 加强支撑

对于转碟转刷单支撑曝气机，恒齿提供了在输出轴上采用加强型支撑的专用减速机，以确保曝气机正常可靠运行。

TO STRENGTHEN THE SUPPORT

For the single support aerator for rotating disc and brush, EVERGEAR are provided on the output shaft Special reducer with reinforced support, To ensure the normal and reliable operation of the aerator.



6. 专业设计

对于倒伞式曝气机，为保证最佳的充氧效果，恒齿对其专用减速机在结构上进行改进，使其根据污水处理池污水液面高低而自动调整倒伞叶轮浸没污水深度，使污水大面积与空气接触，使空气中氧分子迅速溶入污水中，使污水净化更加彻底

PROFESSIONAL DESIGN

For the inverted umbrella aerator, in order to ensure the best oxygenation effect, The structure of the special reducer is improved by EVERGEAR. Make it according to the level of sewage level of sewage treatment tank And automatically adjust the immersion depth of the inverted umbrella impeller, Large area of sewage and air contact, Make the oxygen molecules in the air quickly dissolve into the sewage, Make sewage purification more thorough

7. 防腐处理

减速机长期运行在腐蚀性环境，其内外表面都做了特殊的防腐处理，电机采用的防护等级为 IP55 以上防腐电机，其防雨罩做喷塑处理。

EMBALMED

Long term operation of reducer in corrosive environment, Its inner and outer surfaces are treated with special anticorrosion, The protection grade of the motor is over IP55, Its rainproof cover does spray model processing.

8. 安全密封

污水处理专用减速机的输出轴上的密封，采用双油封形式，避免漏油的发生。

SECURITY SEAL

Sewage treatment special reducer The seal on the output shaft is in the form of a double oil seal. Avoid oil spills.



9. 防爆需求

EXPLOSION-PROOF REQUIREMENTS

10. 满足伺服驱动控制

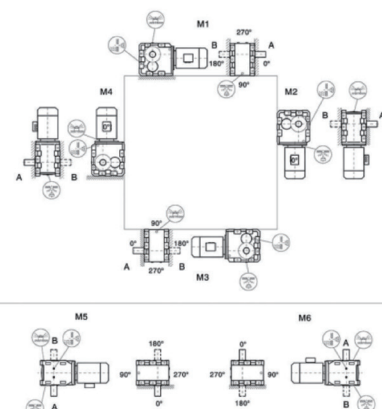
MEETS SERVO DRIVE CONTROL

11. 安装形式多样方便

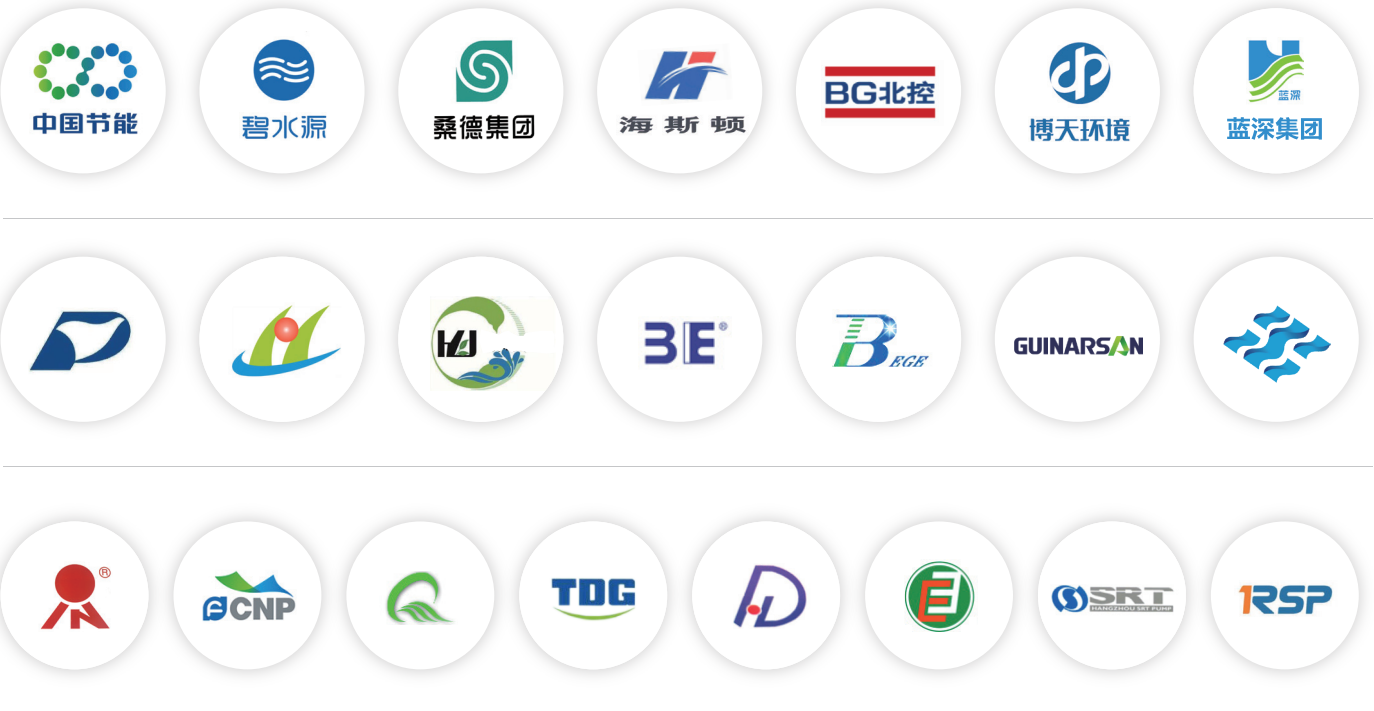
VARIOUS INSTALLATION FORMS ARE CONVENIENT

满足环保设备安装要求，大大提高了设备的自由度

Meet the installation requirements of environmental protection equipment, Greatly improve the freedom of equipment



INDUSTRY
PERFORMANCE
行业业绩



CUSTOMER CASE
客户案例





**THE UNIQUE HUMANE CARE
AND PROFESSIONAL HOT ENTHUSIASTIC
SALES SERVICE SYSTEM**

独具人性关怀与专业热忱的销售服务体系



浙江恒齿传动股份有限公司
ZHEJIANG EVERGEAR DRIVE CO.,LTD

No. 30-70 Xingqiang Road,
Electromechanical Pioneer Park,Wanquan Town,
Pingyang County,Wenzhou,Zhejiang

浙江温州平阳县万全镇机电创业园兴强路30-70号
电话(TEL): 0577-63706661 63706662 63706663
传真(FAX): 0577-63186666 63706669
E-mail: zhejiang@evergear.com.cn

www.evergear.com.cn

